

CD4E, LA4A-EL Remanufactured Valve Body

(F3 Casting, with Solenoid Pack)

Part No.

FM064

CD4E, LA4A-EL Remanufactured Valve Body

(F3 Casting, without Solenoid Pack)

Part No.

FM065

CD4E, LA4A-EL Remanufactured Valve Body

(F7 Casting, without Solenoid Pack)

Part No.

FM067

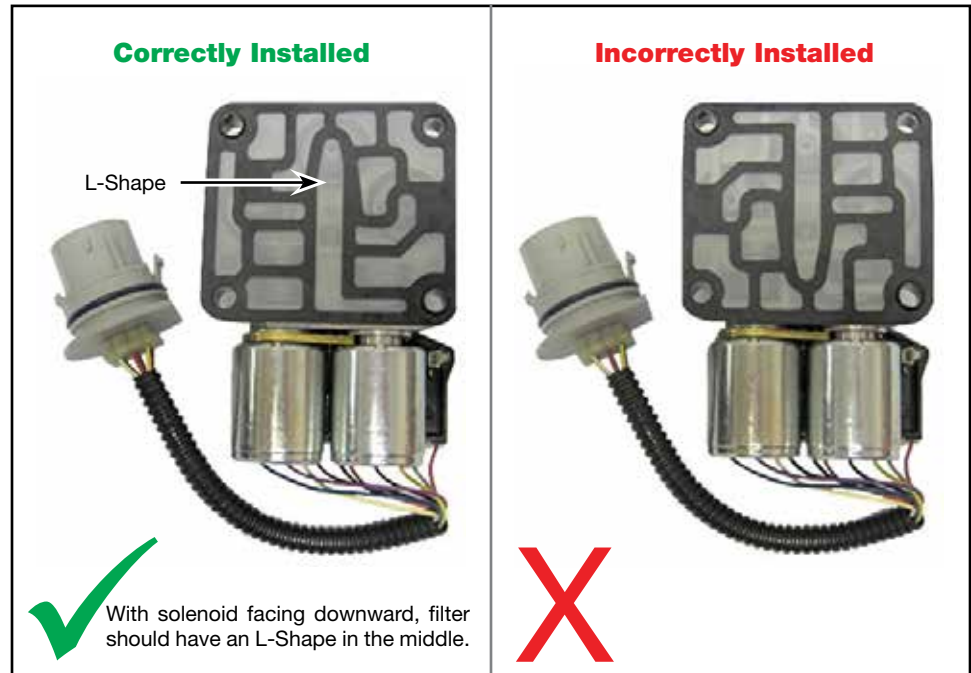
CD4E, LA4A-EL Remanufactured Valve Body

(F7 Casting, with Solenoid Pack)

Part No.

FM068

Gasket Installation



The CD4E solenoid pack gasket can be installed two ways, but only one is correct. Installing the solenoid pack gasket incorrectly can cause delayed Reverse, no upshifts and/or wrong gear starts.