

**Oversized CPC Valve Kit**



**Part No.**  
**98892-23K**

- Oversized CPC Valve
- Oversized End Plug

**NOTE:** Some valve bodies may contain multiple CPC valves. Each kit will repair one location. Casting appearances and locations vary.

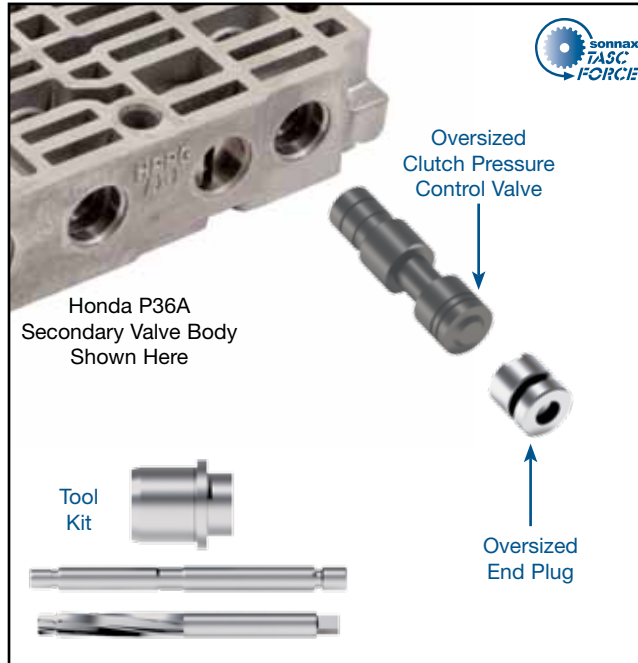
**Tool Kit**



**Part No.**  
**F-98892-TL23**

- Reamer
- Reamer Jig
- Guide Pin

**NOTE:** Sonnax “F-Tool” kits designed to service a specific bore require the VB-FIX, a self-aligning valve body reaming fixture. More information and instructions can be found online at [www.sonnax.com](http://www.sonnax.com).



**Honda 4/5 Speed**

**Honda 4/5 Speed 98892-23K Application Chart**

Make	Model	Years		Trans. Code
		From	To	
Acura	3.0CL	1996	2000	B7ZA
Acura	3.0CL	1996	2000	M7ZA
Acura	3.2CL	2001	2006	BGFA
Acura	3.2CL	2001	2006	MGFA
Acura	3.2TL	1999	1999	B7VA
Acura	3.2TL	2000	2003	M7WA
Acura	3.2TL	2001	2003	B7WA
Acura	MDX	2001	2002	BGHA
Acura	MDX	2001	2002	MGHA
Acura	MDX	2003	2004	MDKA
Acura	MDX	2005	2006	BDKA
Acura	MDX	2007	2011	BYFA
Acura	RDX	2007	2011	BWEA
Acura	RL	2005	2011	MJBA
Acura	TL	2004	2008	BDGA
Acura	TL Type S	2007	2008	BDHA
Acura	TL Type S	2009	2011	BK3A
Acura	TL Type S	2009	2011	BK4A
Acura	TSX	2010	2011	MM2A
Honda	Accord	1998	2002	B7XA
Honda	Accord	2003	2007	BAYA
Honda	Accord	2003	2007	MAYA
Honda	Accord	2008	2011	B97A
Honda	Accord	2010	2010	P79A
Honda	Accord Hybrid	2005	2007	MURA
Honda	Crosstour	2010	2011	BBSA
Honda	Crosstour	2010	2011	BBTA
Honda	Odyssey	1999	2001	B7TA
Honda	Odyssey	1999	2001	B7YA
Honda	Odyssey	2002	2004	BYBA
Honda	Odyssey	2005	2007	BGRA
Honda	Odyssey	2005	2007	PGRA
Honda	Odyssey	2007	2011	B36A
Honda	Odyssey	2007	2011	P36A
Honda	Pilot	2003	2007	BVGA
Honda	Pilot	2003	2007	BVLA
Honda	Pilot	2003	2007	PVGA
Honda	Pilot	2003	2007	PVLA
Honda	Pilot	2008	2008	P34A
Honda	Pilot	2008	2008	P35A
Honda	Pilot	2009	2011	PN3A
Honda	Pilot	2009	2011	PN4A
Honda	Ridgeline	2006	2008	BJFA
Honda	Ridgeline	2006	2008	MJFA
Honda	Ridgeline	2009	2011	PSFA
Saturn	Vue	2004	2007	MDPA
Saturn	Vue	2004	2007	MDRA

**1. Disassembly**

- Remove OE retaining clip and save for reuse.
- Remove and discard OE end plug and CPC valve.
- Remove OE spring and save for reuse.

**2. Bore Preparation**

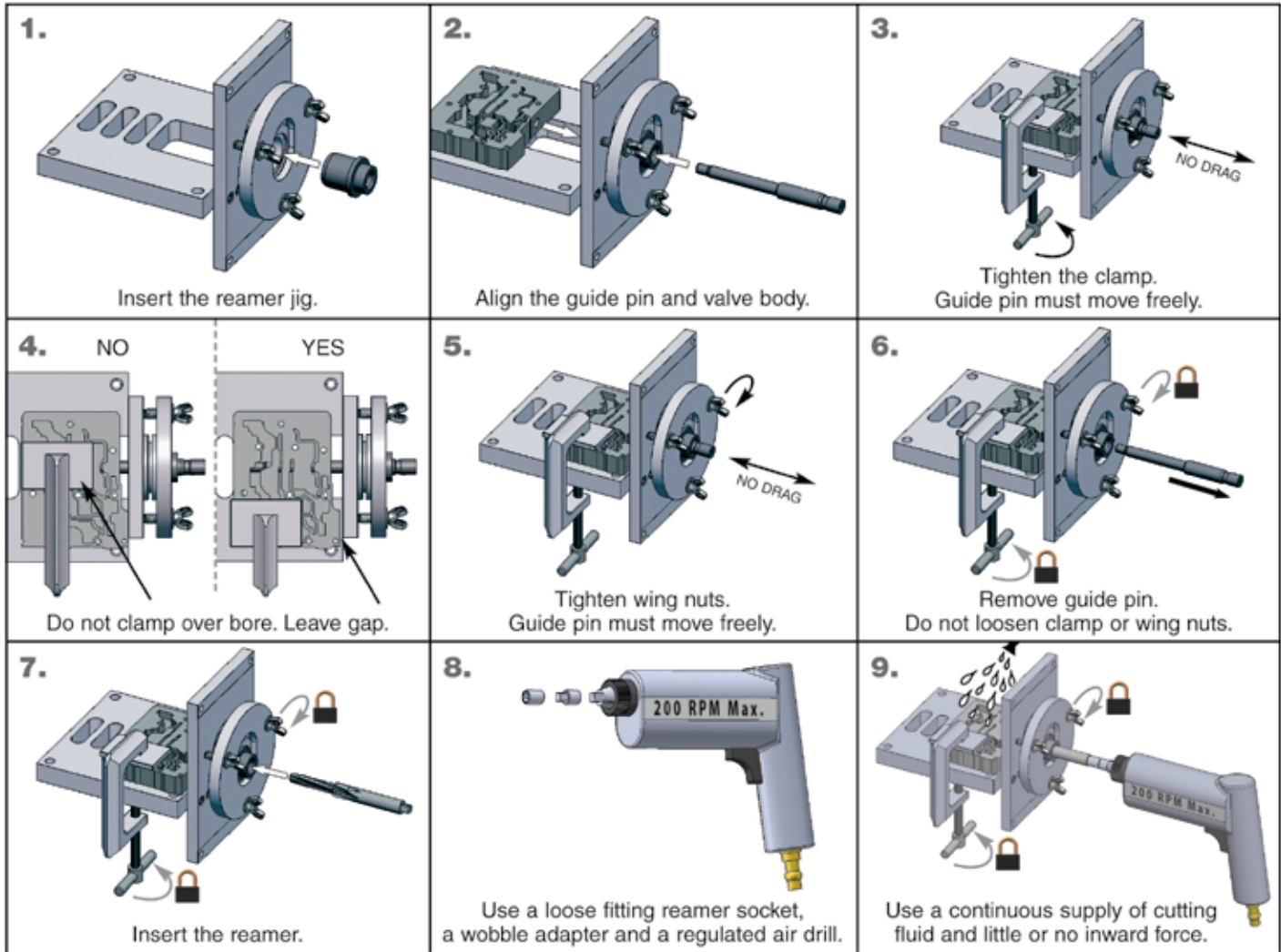
- Clean the bore thoroughly in a solvent tank.
- Generously lubricate the bore and reamer with cutting fluid (i.e. Mobilmet S-122, Lubegard® Bio-Tap, Tap Magic™, etc.). For best results, provide a continuous flow of water-soluble cutting fluid (i.e. Mobilmet S-122) during the reaming process.
- The reamers should be turned using a low RPM, high-torque air drill regulated to a maximum of 200 RPM.
- Examine the bore after cleaning for surface finish, debris and burrs. Flashing and burrs on the exit side of land and in bores must be carefully removed. A small piece of Scotch-Brite™ material attached to a wire and powered with a drill motor is ideal for the task. Scotch-Brite™ is a very abrasive material and all residual debris must be cleaned to ensure particles do not migrate or remain imbedded into the surface. Post cleaning involves several progressive steps with solvent on a lint-free rag.

#### CAUTIONS AND SUGGESTIONS:

- Turning the reamer backward will dull it prematurely.
- Pushing on the reamer will result in poor surface finish and inadequate and sporadic material removal.
- Never use a crescent wrench, ratchet or pliers to turn the reamer.
- A dull reamer will cut a smaller hole. Reamers can be sharpened, but should only be done by a professional tool sharpener. Actual life of a Sonnax reamer before resharpening or replacing averages 50-70 bores.

### 3. Bore Reaming

Use the associated “F-Tool” F-98892-TL23 kit and VB-FIX reaming fixture as illustrated below to ream the bore.



### 4. Installation & Assembly

- Install the OE valve spring into the Sonnax CPC valve pocket.
- Install the Sonnax oversized CPC valve, small spool first, making sure the spring remains in the valve spring pocket.
- Install the Sonnax end plug, with the notch facing the valve and the drilled end facing out.

d. Reinstall the OE retaining clip.

### 5. Final Testing

A vacuum test at the port indicated holds 18 in-Hg or more.

