

Oversized Lockup Control Valve Kit

Part No.
98892-27K



• Valve • Sleeve • End Plug

NOTE: This kit fits various Honda/Acura 5-speed models. However, model to model, the appearance of valve bodies and the location of the lockup control valve may vary. See Honda 98892-27K Application Chart for a detailed guide.

Honda/Acura 5-Speed 98892-27K Application Chart				
Make	Model	Year		Trans. Code
		From	To	
Acura	3.2CL	2001	2006	BGFA
Acura	3.2CL	2001	2006	MGFA
Acura	3.2TL	2000	2003	M7WA
Acura	3.2TL	2001	2003	B7WA
Acura	MDX	2001	2002	BGHA
Acura	MDX	2001	2002	MGHA
Acura	TL	2004	2008	BDGA
Honda	Accord	2003	2007	BAYA
Honda	Accord	2003	2007	MAYA
Honda	Odyssey	2002	2004	BYBA
Honda	Odyssey	2005	2007	BGRA
Honda	Odyssey	2005	2007	PGRA
Honda	Pilot	2003	2007	BVGA
Honda	Pilot	2003	2007	BVLA
Honda	Pilot	2003	2007	PVGA
Honda	Pilot	2003	2007	PVLA

Tool Kit

Part No.
F-98892-TL27

• Reamer • Reamer Jig • Guide Pin

NOTE: Sonnax "F-Tool" kits designed to service a specific bore require the VB-FIX, a self-aligning valve body reaming fixture. More information and instructions can be found online at www.sonnax.com.

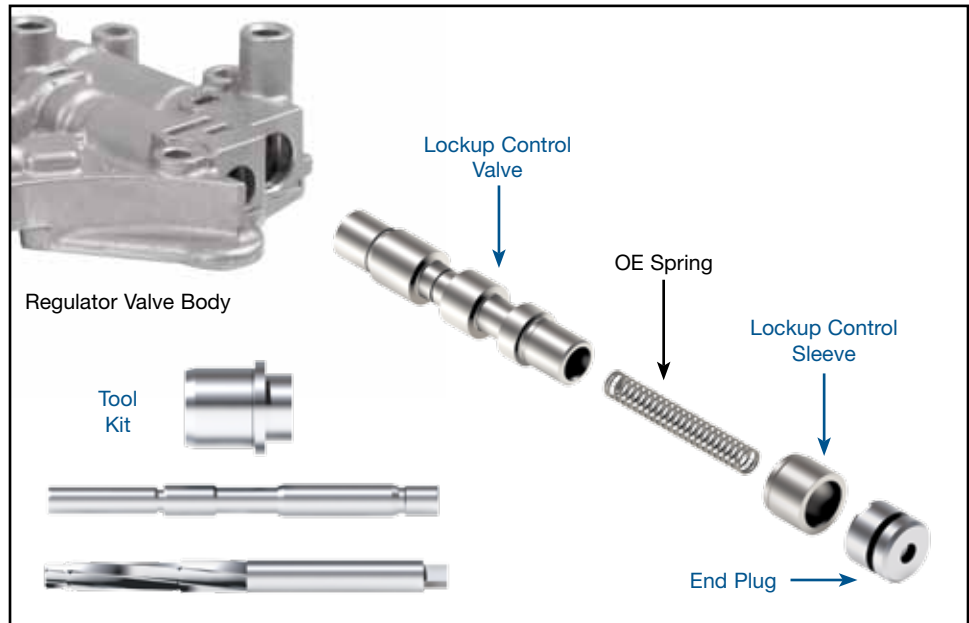
Also Available

Oversized Lockup Control Valve Repair Kit
98892-17K

4 Speed



Honda/Acura 5 Speed



1. Disassembly

- Remove OE lockup control valve train from valve body.
- Discard OE valve, sleeve and end plug. Save end plug retainer clip and spring for reuse.

2. Bore Preparation

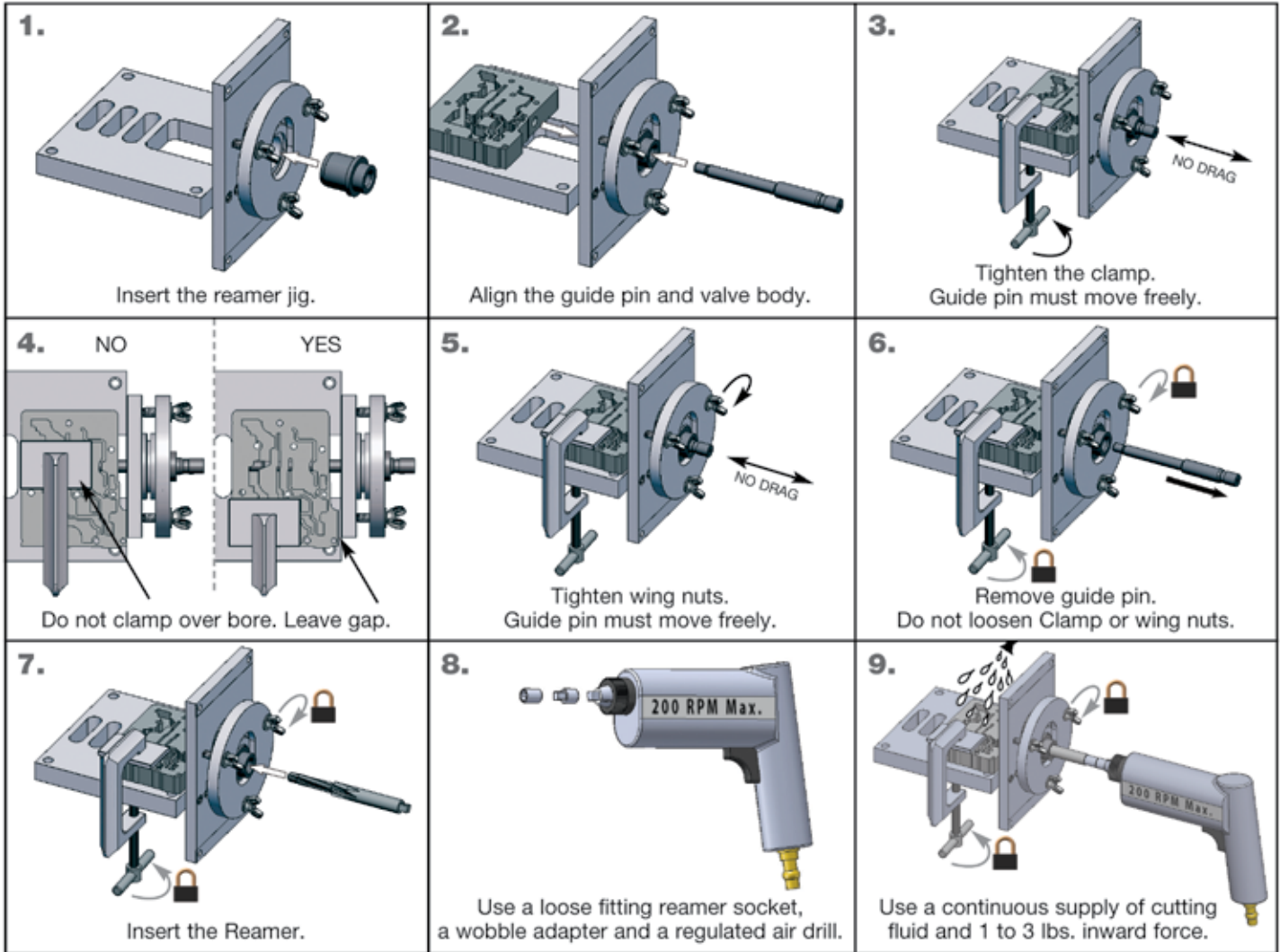
- Clean the bore thoroughly in a solvent tank.
- Generously lubricate the bore and reamer with cutting fluid (i.e. Mobilmet S-122, Lubgard® Bio-Tap, Tap Magic™, etc.). For best results, provide a continuous flow of water-soluble cutting fluid (i.e. Mobilmet S-122) during the reaming process.
- The reamers should be turned using a low RPM, high-torque air drill regulated to a maximum of 200 RPM.
- Examine the bore after cleaning for surface finish, debris and burrs. Flashing and burrs on the exit side of land and in bores must be carefully removed. A small piece of Scotch-Brite™ material attached to a wire and powered with a drill motor is ideal for the task. Scotch-Brite™ is a very abrasive material and all residual debris must be cleaned to ensure particles do not migrate or remain imbedded into the surface. Post cleaning involves several progressive steps with solvent on a lint-free rag.

CAUTIONS AND SUGGESTIONS:

- Turning the reamer backward will dull it prematurely.
- Pushing on the reamer will result in poor surface finish and inadequate and sporadic material removal.
- Never use a crescent wrench, ratchet or pliers to turn the reamer.
- A dull reamer will cut a smaller hole. Reamers can be sharpened, but should only be done by a professional tool sharpener. Actual life of a Sonnax reamer before resharpening or replacing averages 50-70 bores.

3. Bore Reaming

Use the associated "F-Tool" F-98892-TL27 kit and VB-FIX reaming fixture as illustrated below to ream the bore.



4. Installation & Assembly

- Insert the Sonnax valve with the spring pocket outboard.
- Insert the Sonnax sleeve with the stepped O.D. end inboard.
- Insert the OE spring, making sure the spring sits into the valve spring pocket.
- Insert the Sonnax end plug and secure it in position with the OE retainer clip.

5. Final Testing

Vacuum tests at the ports indicated hold the recommended minimum amount of in-Hg.

