

EZ-Lap Diamond Hone

Part No.
EZ-LAP-HONE



EZ-Lap Diamond Hone

1. Check reamer(s) after each use as aluminum build-up can occur on the cutting edges after bore reaming (**Figure 1**).
2. Remove any aluminum build-up on reamer with a fine-grit Sonnax diamond honing tool **EZ-LAP-HONE**.
3. Carefully run hone along the inside of the reamer's cutting edges to remove build-up (**Figure 2**).



CAUTION: Reamer can be easily damaged. See page 2 for proper usage and techniques.

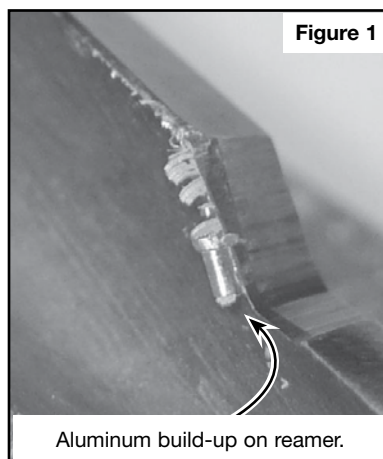


Figure 1

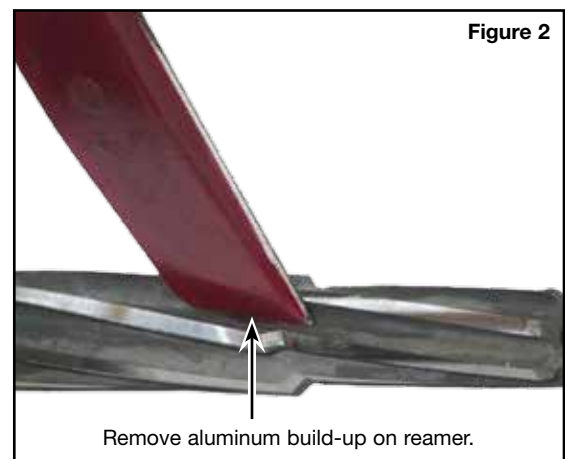


Figure 2

Proper Reamer Care

Proper maintenance of Sonnax reamers is the best way to ensure their consistent performance and long life. Follow these easy steps.



Watch the step-by-step video at www.sonnax.com/reamer_care

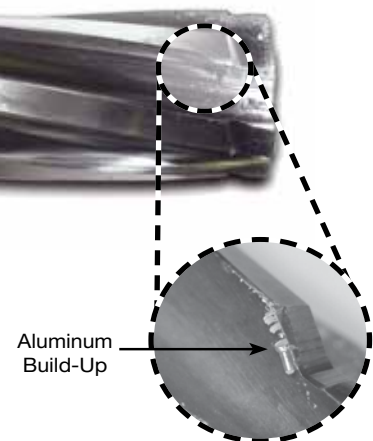
1. Check for Build-Up After Each Use

Aluminum build-up can occur along reamer cutting edges every time a bore is reamed. Debris may not always be present in large amounts and may be very hard to see, but over time it will accumulate. Too much will make it difficult or impossible for the tool to cut correctly.

Use an eye loupe to examine the edges in detail or feel for build-up along the edges with a penny (Figure 1).



Figure 1



2. Remove Build-Up

If you identify or suspect build-up, extend the life of your reamer by cleaning it off with a fine-grit diamond honing tool such as the Sonnax EZ-LAP-HONE.



CAUTION: This technique is for removing build-up only, NOT for re-sharpening. Over-aggressiveness with the hone will ruin the reamer.

1. Place the tool along one cutting edge of the reamer and draw it forward smoothly three to four times (Figure 2).
2. Inspect the edge. If it's clean, keep going around the reamer, cleaning each cutting edge until all build-up is removed. Multi-diameter reamers can be cleaned the same way, just be sure to stay away from the guide nub (Figure 3). That is not a cutting edge.

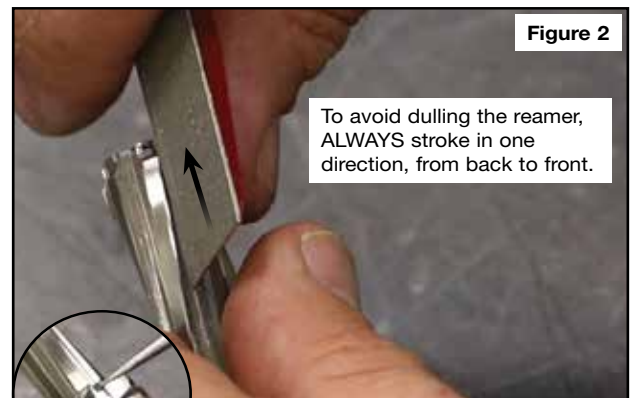


Figure 2

Figure 3



CAUTION: Keep the hone away from reamer guide nubs.

3. Clean & Store Reamer

1. When you're done with the hone, clean the abrasive off the reamer in a solvent tank or with low-speed compressed air.
2. Lightly oil the reamer to prevent corrosion. The same oil you use for reaming is recommended.
3. Return the reamer to its protective case, otherwise it can roll around, get nicked and dull, etc.